



Old Lain, Harrietsham, Maidstone, Kent, ME17 1AZ

Asking Price £775,000



A stunning four double bedroom, three bathroom detached bungalow located on a private road in the highly desirable village of Harrietsham. Within a short walk, you'll find a wealth of excellent local amenities, including shops, a welcoming pub, a fantastic primary school, and a nearby train station.

This property boasts impressive kerb appeal, approached via a generously sized sweeping driveway that features a spacious double garage and a beautifully landscaped front garden. Upon entering, you're welcomed by a bright and airy hallway that guides you into a modern, well-appointed open-plan kitchen and dining area with large adjacent utility room. The kitchen/diner seamlessly extends to the expansive patio outside, perfect for entertaining in the summer months.

A spacious yet cosy dual aspect lounge leads into a generous study, further connecting to the principal bedroom which also provides access to the patio and benefits from an en-suite bathroom. There are three additional double bedrooms, along with a separate shower room and bathroom, ensuring flexible living arrangements in excellent move-in condition.

Further advantages of this wonderful home include a brick-built store featuring a pump house and shed. The garden has been thoughtfully designed, featuring a sizeable patio with two seating areas—one of which is covered by an impressive pergola, and a large pond, all of which enjoy a desirable south-facing orientation and offers a high degree of privacy.

Tenure: Freehold. Council Tax Band: E. EPC rating: D.



LOCATION

Situated in the popular village of Harrietsham, which benefits from convenient access to various amenities such as a general store, supermarket, pub, primary school, parish church, doctors surgery, and a London line station. Additionally, the larger village of Lenham is within a distance of approximately 2 miles, offering further amenities. Maidstone, the county town of Kent, is also easily accessible, being approximately 8 miles away.

ACCOMODATION

Entrance Hall

Kitchen / Dining Area

Utility

Sitting Room

Study

Bedroom One

En Suite

Bedroom Two

Bedroom Three

Bedroom Four

Shower Room

Bathroom

EXTERNAL

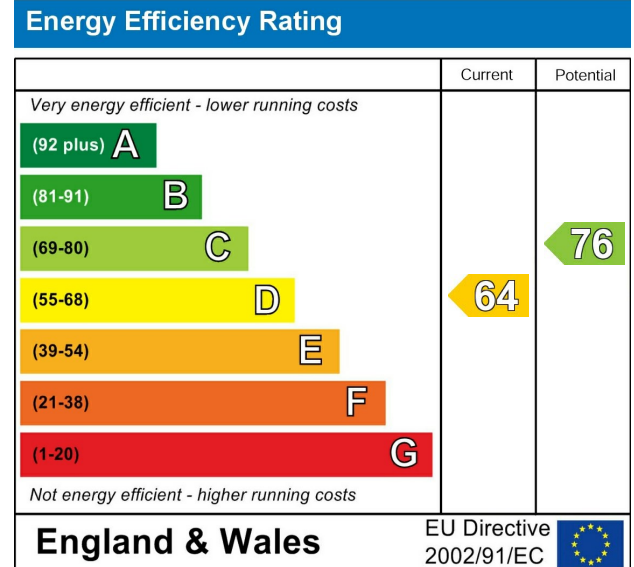
Large Garage

Brick Built Store

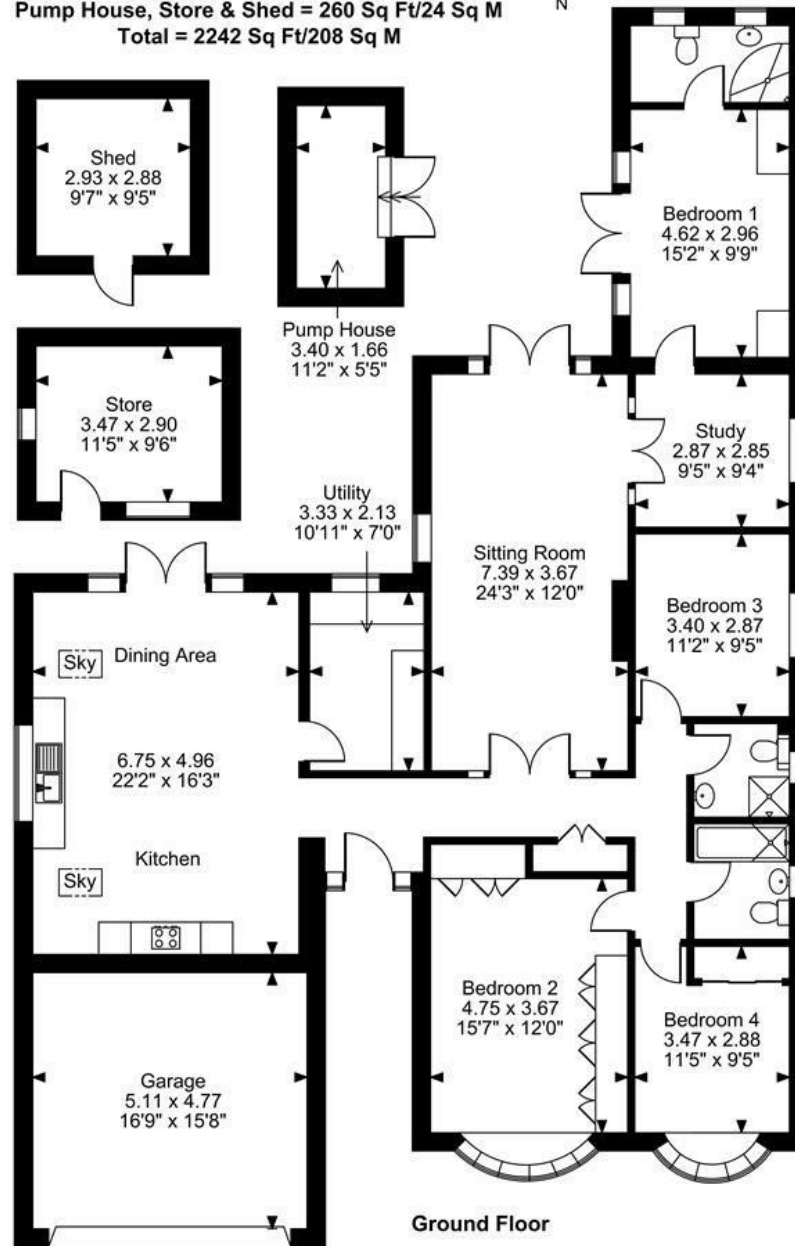
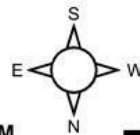
Front and Rear Gardens

VIEWING

Strictly by arrangement with the Agent's Bearsted Office, 132 Ashford Road, Bearsted, Maidstone, Kent ME14 4LX . Tel: 01622 739574.



Old Lain, Harrietsham, Maidstone
 Approximate Gross Internal Area
 Main House = 1720 Sq Ft/160 Sq M
 Garage = 262 Sq Ft/24 Sq M
 Pump House, Store & Shed = 260 Sq Ft/24 Sq M
 Total = 2242 Sq Ft/208 Sq M



FOR ILLUSTRATIVE PURPOSES ONLY - NOT TO SCALE

The position & size of doors, windows, appliances and other features are approximate only.
 © ehouse. Unauthorised reproduction prohibited. Drawing ref. dig/8678531/LCO

